



French manufacturer of water  
treatment equipment for  
**SWIMMING POOLS & SPAS**

**RESPONSIBLE WATER ENJOYMENT**

## 2023 Brochure



**WATER TREATMENT SYSTEMS**  
**SERVICES CUSTOMER**  
TEAM SPIRIT INNOVATION REGULATION  
**QUALITY POOLS AND SPAS**  
**CHLORINE** **pH** **CONTROL**  
**RESPONSABILITY** **POOL-DOSING**

# PRESENTATION OF THE COMPANY



**OVER 30 YEARS  
OF EXPERIENCE**



**3 TIMES  
BEST SCP SUPPLIER**



**98%  
PRODUCTION IN  
FRANCE**



**OVER 24 000  
PUMPS SOLD  
IN 2022**



**”** At Avady, we design products that meet the needs and wishes of private individuals and professionals, based on solid experience.

We design equipment to simplify the daily life of pool users and installers, while ensuring that the environmental impact is as neutral as possible.. **”**

Isabelle & Dominique Ducoeur





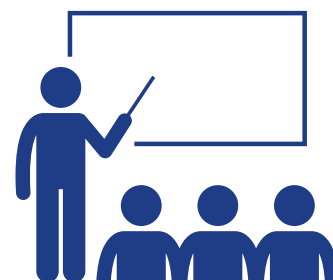
# AVADY SERVICES



Return rate  
= 0,45 %



Free technical support



Commercial & Technical  
Training



Over 350 technical  
videos



Reactive after-  
sales service  
= 48h max



Products adapted to  
installers' needs



Scan to discover our technical  
videos!



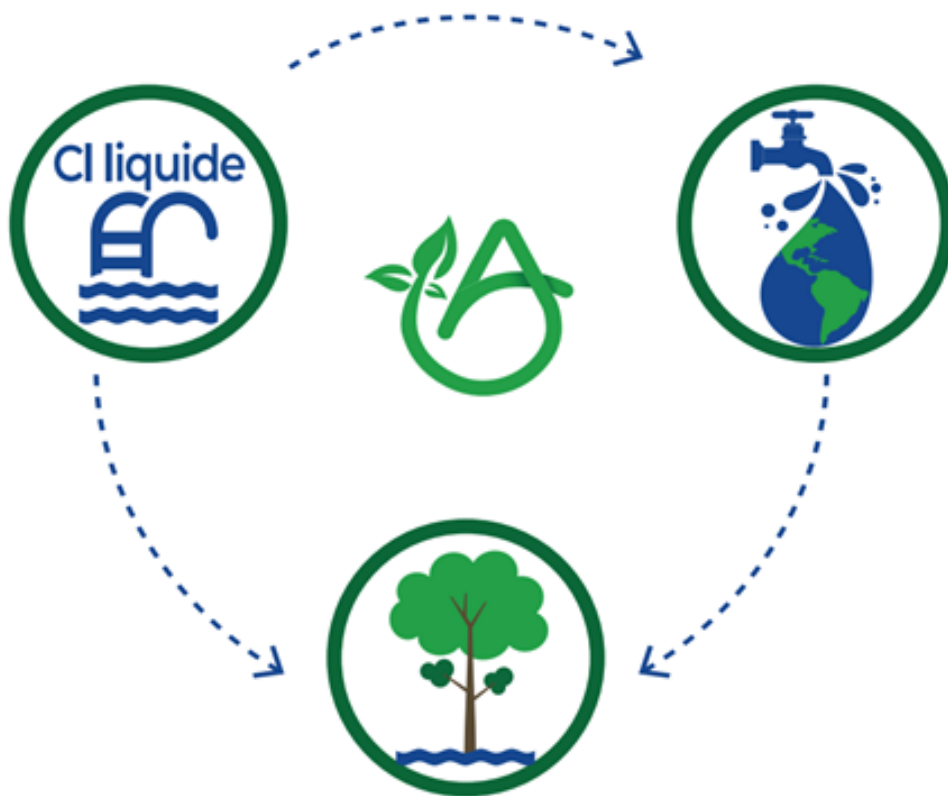
# AVADY'S COMMITMENTS



Reliable equipment for liquid chlorine treatment



The chlorine disappears automatically after a few days



The water in the pool can then be reused for daily needs (watering for instance)



Large cities already use chlorinated water for watering green spaces (Toulouse, Limoges, Niort): water treated with liquid chlorine becomes ecological precisely because it is recyclable and reusable.





# SUMMARY

Our 2023 Product Range .....	6
Focus on our DUO pH Rx.....	8
Private Pools.....	9
Private and Public Pools.....	11
Public Pools.....	15
Pumps.....	17
Connected Equipment.....	18
Exclusive Avady Accessories.....	19
Accessories.....	21
Spare Parts.....	23
General Terms and Conditions of Sale.....	24



# OUR 2023 PRODUCT RANGE

Private Pools  
Public Pools

Device	Pool Volume	Private SPAS	Public SPAS	O2	RX (Cl/mv)	Cl (ppm, mg/l)	pH
TEMPO UV	≤ 150m <sup>3</sup> (O2) ≤ 80m <sup>3</sup> (chlorine)			Timer		Timer	
PRIM pH	≤ 120m <sup>3</sup>						✓
PRIM Rx	≤ 60m <sup>3</sup>				✓		
ChloriProtect Rx	Oui				✓		
POOLEasy pH	≤ 150m <sup>3</sup>	✓					✓
POOLEasy Rx	≤ 80m <sup>3</sup>	✓			✓		
PROPilot pH Rx (1,5l/h)	≤ 150m <sup>3</sup>	✓			✓		✓
PROPilot pH Rx (3l/h)	≤ 280m <sup>3</sup>	✓			✓		✓
DUO pH Rx (1,5-3L/h)	≤ 150m <sup>3</sup> ≤ 90m <sup>3</sup>	✓			✓		✓
DUO pH Turboxy® (1,5-3L/h)	From 15 to 150m <sup>3</sup> From 15 to 90m <sup>3</sup>					✓	✓
PANDuo pH Rx	≤ 150m <sup>3</sup> ≤ 90m <sup>3</sup>				✓		✓
PANDuo pH Turboxy® (1,5-3L/h)	From 15 to 150m <sup>3</sup> From 15 to 90m <sup>3</sup>					✓	✓
PANDuo pH CLM (1,5L/h-1,5L/h)	≤ 30m <sup>3</sup>	≤ 30m <sup>3</sup>	≤ 30m <sup>3</sup>			✓	✓
PANpilot pH Rx S20 (3-8L/h)	30 à 300m <sup>3</sup> 30 à 220m <sup>3</sup>				✓		✓
PANpilot pH Turboxy® S20 (3-8L/h)	From 15 to 300m <sup>3</sup> From 15 to 220m <sup>3</sup>					✓	✓
PANmagnet pH Rx S20 (8-8L/h)	From 30 to à 450m <sup>3</sup> From 30 to 250m <sup>3</sup>				✓		✓
Physico pH® Rx	From 30 to 300m <sup>3</sup>				✓		✓
Physico pH® Turboxy®	From 15 to 1500m <sup>3</sup>					✓	✓
Physico pH® CLM	≤ 1500m <sup>3</sup>	✓	✓			✓	✓
MAGNET S20 pH (8l/h)	From 30 to 900m <sup>3</sup> From 30 to 450m <sup>3</sup>						✓
MAGNET S20 Rx (8l/h)	From 30 to 450m <sup>3</sup> From 30 to 250m <sup>3</sup>				✓		



# OUR 2023 PRODUCT RANGE

Device	Proportional dosing	Max stabiliser rate	Linked to a salt chlorinator	Digital display	Temperature display	Alarm	WEB interface	Device warranty (2 years)	pH/Rx probe warranty (1 year)
TEMPO UV				✓				✓	
PRIM pH	✓			✓		Mini-maxi		✓	
PRIM Rx	✓	15 ppm		✓		Mini-maxi		✓	
ChloriProtect Rx		15 ppm	✓	✓		Mini-maxi		✓	
POOLeasy pH	✓			✓		Volumetric		✓	✓
POOLeasy Rx	✓	15 ppm		✓		Volumetric		✓	✓
PROpilot pH Rx (1,5l/h)	✓	15 ppm	✓	✓		Volumetric	Option	✓	✓
PROpilot pH Rx (3l/h)	✓	15 ppm	✓	✓		Volumetric	Option	✓	✓
DUO pH Rx (1,5-3L/h)	✓	15 ppm		✓		Volumetric	Option	✓	
DUO pH Turboxy® (1,5-3L/h)	✓	40 ppm		✓	✓	Volumetric	Option	✓	✓
PANDuo pH Rx	✓	40 ppm		✓	Option	Volumetric	Option	✓	✓
PANDuo pH Turboxy®(1,5-3L/h)	✓	40 ppm		✓	✓	Volumetric	Option	✓	✓
PANDuo pH CLM (1,5L/h-1,5L/h)	✓	80 ppm		✓	Option	Volumetric	Option	✓	✓
PANpilot pH Rx S20(3-8L/h)	✓	15 ppm		✓	Option	Volumetric	Option	✓	✓
PANpilot pH Turboxy® S20 (3-8L/h)	✓	40 ppm		✓	✓	Volumetric	Option	✓	✓
PANmagnet pH Rx S20 (8-8L/h)	✓	15 ppm		✓		Timed		✓	✓
Physico pH® Rx	✓	40 ppm	✓	✓	Option	Volumetric	Option	✓	✓
Physico pH® Turboxy®	✓	40 ppm		✓	✓	Volumetric	Option	✓	
Physico pH® CLM	✓	80 ppm	✓	✓	Option	Volumetric	Option	✓	✓
MAGNET S20 pH (8l/h)	✓			✓	✓	Timed		✓	
MAGNET S20 Rx (8l/h)	✓	15 ppm		✓	✓	Timed		✓	



# FOCUS ON : DUO pH/Rx

The multifunction controller!

*Suitable for pools from 1 to 150 m<sup>3</sup>*

The DUO pH Rx will be your best ally to enjoy your pool with peace of mind.

This combined regulator takes care of adjusting the quality of your water thanks to its two integrated pumps.



Simultaneous regulation of pH and chlorine according to the needs of the pool



Has a volumetric alarm to prevent emptying and an adjustable overdose alarm

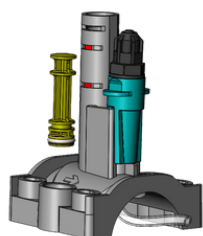


Device: 2 year warranty  
Probe: 1 year warranty



Quick and easy installation and setup thanks to the complete kit offered, including two 2in1 probe holders.

*The 2in1 probe holder is an innovative universal accessory that can be installed in all configurations.  
(DN50/DN63/horizontal/vertical)*



Eco-friendly: the chlorine disappears and leaves no residue/ the water can be reused for your daily and domestic needs



Scan  
to discover the product in video and  
download its technical data sheet!



# PRIVATE POOLS

## TEMPO UV®

Universal timed doser, which injects active oxygen, chlorine or flocculant.

Suitable for pools  $\leq 150\text{m}^3$  ( $\text{O}_2$ ) |  $\leq 80\text{m}^3$  (chlorine)

TEMPO UV® and its complete kit

AYPO15003



## PRIM® pH or Rx

Proportionally regulates the pH- or pH+ or the chlorine concentration (mV) of the pool in the Rx version.

The pump stops dosing if the value is too low or too high and displays the status.

Suitable for pools from 10 to 120m<sup>3</sup> (pH) | From 10 to 60m<sup>3</sup> (chlorine)

PRIM® pH and its complete kit

AYPO15001

PRIM® Rx and its complete kit

AYPO15002



## ChloriProtect® Rx

Secures the chlorine production of the salt water chlorinator and protects equipment such as bar covers, roller shutters or liners.

Displays the chlorine level in mV.

Chloriprotect® Rx and its complete kit

AYPO15009



Find all our equipment for private pools!

# PRIVATE POOLS

## POOLeasy® pH/Rx

Automatically regulates pH or chlorine (mV).

Equipped with a 2-in-1 probe holder that can be installed horizontally or vertically and fits diameters 50 and 63.

Volumetric alarm to avoid emptying the chemical container.

Suitable for pools from 1 to 150m<sup>3</sup> (pH version) | From 1 to 80m<sup>3</sup> (Rx version)

POOLeasy® pH and its complete kit

AYPO16001

POOLeasy® Rx and its complete kit

AYPO16003



## PROpilot pH® Rx

Simultaneously regulates pH and chlorine (mV).

External chlorine injection via activation of either a pump, an electrolyser or a solenoid valve.

Equipped with two 2-in-1 probe holders that can be installed horizontally or vertically and fit diameters 50 and 63.

Volumetric alarm to prevent emptying of the chemical canister.

Optional AvadyConnect® communication kit: data consultation and remote control on [www.avadyconnect.com](http://www.avadyconnect.com) (p18).

Suitable for pools from 1 to 150m<sup>3</sup> (1.5L/h) | From 1 to 280m<sup>3</sup> (3L/h)

PROpilot pH® Rx 1,5L/h and its complete kit

AYPO16002

PROpilot pH® Rx 3L/h and its complete kit

AYPO16004

Avady Connect® Kit Option

AYAC100524



Find all our equipment for private pools!

# PRIVATE AND PUBLIC POOLS

## DUO pH Rx (1,5-3L/h)

Regulates and injects pH and chlorine simultaneously (mV).

Integrated pumps: pH 1.5L/h and chlorine 3L/h.

Equipped with two 2-in-1 probe holders that can be installed horizontally or vertically and adapt to diameters 50 and 63.

Volumetric alarm to prevent emptying of the chemical container.

Optional AvadyConnect® communication kit: data consultation and remote control on [www.avadyconnect.com](http://www.avadyconnect.com) (p17).

Suitable for private pools  $\leq 150\text{m}^3$ .

Suitable for public pools  $\leq 90\text{m}^3$ .

Suitable for guest houses, residences.

DUO pH Rx (1,5-3L/h) and its complete kit  
Avady Connect® Kit Option

AYPO16132  
AYAC100524



## DUO pH Turboxy (1,5-3L/h)

Regulates and injects pH and chlorine simultaneously (ppm - amperometric probe).

Turboxy probe: water temperature display + flow rate measurement

Integrated pumps: pH 1.5L/h and chlorine 3L/h.

Equipped with a 2-in-1 probe holder that can be installed horizontally or vertically and fits diameters 50 and 63.

The Turboxy probe flange is suitable for horizontal DN50 installation only or use the Turboxy remote tube kit.

Volumetric alarm prevents emptying of the chemical container.

Optional AvadyConnect® communication kit: data consultation and remote control on [www.avadyconnect.com](http://www.avadyconnect.com) (p18).

Suitable for private pools from 15 to  $150\text{m}^3$ , public pools from 15 to  $90\text{m}^3$ , hotels, residences.

Duo pH Turboxy (1,5-3L/h) and its complete kit  
Avady Connect® Kit Option

AYPO16126  
AYAC100524



# PRIVATE AND PUBLIC POOLS

## PANduo pH Rx (1,5-3L/h)

Regulates and injects pH and chlorine simultaneously (mV).

Integrated pumps: pH 1.5L/h and chlorine 3L/h.

Optional water temperature.

The analysis chamber allows for easy monitoring and maintenance.

The sampling system facilitates manual analysis.

Volumetric alarm prevents emptying of the chemical container.

The unit is predisposed to receive the AvadyConnect® option: data consultation and remote control on [www.avadyconnect.com](http://www.avadyconnect.com) (p18).

Suitable for private pools  $\leq 150\text{m}^3$ .

Suitable for public pools  $\leq 90\text{m}^3$ .

Suitable for guest houses, residences.

PANduo pH Rx (1,5-3L/h) and its complete kit

AYPA1221

Avady Connect® Kit Option

AYAC100524



Avady Connect  
Option

## PANduo pH Turboxy (1,5-3L/h)

Regulates and injects pH and chlorine simultaneously (ppm - amperometric probe).

Integrated pumps: pH 1.5L/h and chlorine 3L/h.

Turboxy probe: water temperature display + flow detection.

The analysis chamber allows simplified monitoring and maintenance and optimal use of the Turboxy probe.

Its sample collection facilitates mandatory manual analyses.

Volumetric alarm prevents emptying of the chemical container.

The unit is prepared to receive the AvadyConnect® option: data consultation and remote control on [www.avadyconnect.com](http://www.avadyconnect.com) (p18).

Meets the requirements dictated by the French Health Agency (ARS).

Suitable for private pools  $\leq 150\text{m}^3$ .

Suitable for public pools  $\leq 90\text{m}^3$ .

Suitable for hotels, residences.

PANduo pH Turboxy (1,5-3L/h) and its complete kit

AYPA1216

Avady Connect® Kit Option

AYAC100524



Avady Connect  
Option



# PRIVATE AND PUBLIC POOLS

## PANduo pH CLM (1,5-1,5L/h)

Simultaneously regulates and injects pH and chlorine (ppm - amperometric probe / membrane).

Integrated pumps: pH 1.5L/h and chlorine 1.5L/h.

Optional water temperature.

The analysis chamber allows easy monitoring and maintenance.

The sampling system facilitates mandatory manual analyses.

Volumetric alarm prevents emptying of the chemical container.

The unit is predisposed to receive the AvadyConnect® option: data consultation and remote control on [www.avadyconnect.com](http://www.avadyconnect.com) (p18).

Meets the requirements dictated by the French Health Agency (ARS).

Suitable for public pools and spas  $\leq 30\text{m}^3$ .

Suitable for hotels, residences



Avady Connect  
Option

PANduo pH CLM (1,5-1,5L/h) and its complete kit	AYPA1219
Avady Connect® Kit Option	AYAC10052
Temperature Option	AYAC100605

## PANpilot pH Rx S20 (3-8L/h)

Regulates and injects pH and chlorine simultaneously (mV).

Integrated pumps: pH 3L/h and chlorine 8L/h.

Combines the best of metering pump technology; peristaltic for pH and electromagnetic for chlorine (mV).

Optional water temperature.

The analysis chamber allows easy monitoring and maintenance.

The sampling chamber facilitates mandatory manual analysis.

Volumetric alarm prevents emptying of the chemical container.

The unit is predisposed to receive the AvadyConnect® option: data consultation and remote control on [www.avadyconnect.com](http://www.avadyconnect.com) (p18).

Suitable for private pools from 30 to 300m<sup>3</sup>.

Suitable for public pools from 30 to 220m<sup>3</sup>.

Suitable for campsites, hotels, residences and requiring little stabilizer



Avady Connect  
Option

PANpilot pH Rx S20 (3-8L/h) and its complete kit	AYPA1207
Avady Connect® Kit Option	AYAC100524
Temperature Option	AYAC100605

# PRIVATE AND PUBLIC POOLS

## PANpilot pH Turboxy S20 (3-8L/h)

Regulates and injects pH and chlorine simultaneously (ppm - amperometric probe).  
amperometric probe).

Integrated pumps: pH 3L/h and chlorine 8L/h.

Combines the best of dosing pump technology; peristaltic for pH and electromagnetic for chlorine (ppm).

Turboxy probe: Water temperature display + flow detection.

The analysis chamber allows simplified monitoring and maintenance as well as an optimal use of the Turboxy probe.

Its sample collection facilitates the obligatory manual analyses.

Volumetric alarm prevents emptying of the chemical container.

The unit is predisposed to receive the AvadyConnect® option: data consultation and remote control on [www.avadyconnect.com](http://www.avadyconnect.com) (p18).

Meets the requirements dictated by the French Health Agency (ARS).

Suitable for private pools  $\leq 300\text{m}^3$ .

Suitable for public pools  $\leq 220\text{m}^3$ .

Suitable for campsites, hotels, residences.

PANpilot pH Turboxy S20 (3-8L/h) and its complete kit  
Avady Connect® Kit Option

AYPA1217  
AYAC100524



Avady Connect  
Option



## PANmagnet® pH Rx S20 (8-8L/h)

Regulates and injects pH and chlorine simultaneously (mV).

Integrated pumps: pH 8L/h and chlorine 8L/h.

Robust electromagnetic pumps.

Pumps equipped with a noise reduction device.

Analysis chamber allows for easy monitoring and maintenance.

The sampling chamber facilitates manual analysis.

Volumetric alarm prevents emptying of the chemical container.

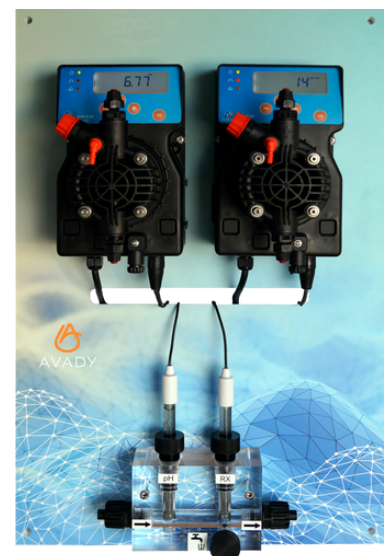
Suitable for private pools from 30 to 450m<sup>3</sup>.

Suitable for public pools from 30 to 250m<sup>3</sup>.

Suitable for campsites, hotels, residences requiring little stabilizer.

PANmagnet® pH Rx S20 (8-8L/h) and its complete kit

AYPA1009



# PUBLIC POOLS

## Physico pH® Rx

Simultaneously regulates pH, chlorine or bromine (mV).

Optional water temperature.

The analysis chamber allows easy monitoring and maintenance.

The sampling system facilitates manual analysis.

Volumetric alarm prevents emptying of the chemical container.

The unit is predisposed to receive the AvadyConnect® option: data consultation and remote control on [www.avadyconnect.com](http://www.avadyconnect.com) (p18).

Meets the requirements dictated by the French Health Agency (ARS).

Suitable for public pools up to 1500m<sup>3</sup>.

Physico pH® Rx and its complete kit  
Avady Connect® Kit Option  
Temperature Option

AYPA1212  
AYAC100524  
AYAC100605



Avady Connect  
Option



## Physico pH® Turboxy

Regulates and injects pH and chlorine simultaneously (ppm - amperometric probe).

Turboxy probe: water temperature display + flow detection.

The analysis chamber allows simplified monitoring and maintenance as well as optimal use of the Turboxy probe.

Its sample collection facilitates mandatory manual analyses.

Volumetric alarm prevents emptying of the chemical container.

The unit is predisposed to receive the AvadyConnect® option: data consultation and remote control on [www.avadyconnect.com](http://www.avadyconnect.com) (p18).

Meets the requirements dictated by the French Health Agency (ARS).

Suitable for public pools up to 1500m<sup>3</sup>.

Physico pH® Turboxy and its complete kit  
Avady Connect® Kit Option

AYPA1202  
AYAC100524



Avady Connect  
Option



# PUBLIC POOLS

## Physico pH® CLM

Simultaneously regulates pH and chlorine (ppm - amperometric probe / membrane).

Optional water temperature.

The analysis chamber allows easy monitoring and maintenance.

The sampling chamber facilitates mandatory manual analysis.

Volumetric alarm prevents emptying of the chemical container.

The unit is predisposed to receive the AvadyConnect® option: data consultation and remote control on [www.avadyconnect.com](http://www.avadyconnect.com) (p18).

Meets the requirements dictated by the French Health Agency (ARS).

Suitable for public pools  $\leq 1500\text{m}^3$ .

Suitable for campsites, hotels, residences, balneo...

Physico pH® CLM and its complete kit  
Avady Connect® Kit Option  
Temperature Option

AYPA1218  
AYAC100524  
AYAC100605



Find all our equipment for public pools!



# PUMPS

## PeriFix Pump

Compact, reliable and easy to use peristaltic dosing pump (not compatible with hydrochloric acid)



PeriFix 1,5L/h and its complete kit - up to 50 m <sup>3</sup>	AYPO15017
PeriFix 3L/h and its complete kit - up to 80 m <sup>3</sup>	AYPO15020

## MAGNET Pumps

Electromagnetic dosing pumps, which, coupled with a pH or chlorine regulator, allow the automatic dosing of products used in the treatment of swimming pools water. Acid-proof, reinforced polypropylene housing. Easy to use and maintain



MAGNET S10 2L/h 3 bars and its complete kit ▪ up to 60m <sup>3</sup> (in); 40m <sup>3</sup> (out)	AYPO241002039A020
--	-------------------

MAGNET S10 6L/h 3 bars and its complete kit ▪ up to 180m <sup>3</sup> (in); 120m <sup>3</sup> (out)	AYPO241006039A020
--	-------------------



MAGNET S20 8L/h 3 bars and its complete kit ▪ up to 300 m <sup>3</sup> (in) ; 120 m <sup>3</sup> (out)	AYPO231008039C030
---	-------------------

MAGNET S20 12L/h 3 bars and its complete kit ▪ up to 400 m <sup>3</sup> (in) ; 360 m <sup>3</sup> (out)	AYPO231012039C010
--	-------------------



MAGNET S40 50L/h 3 bars and its complete kit ▪ up to 1500m <sup>3</sup>	AYPO281050037C010
---	-------------------

## pH/Rx INSTRUMENTS Pumps

Electromagnetic dosing pumps, which allow to dose proportionally to the demand, products used in the treatment of swimming pool water. Backlit display. Acid-proof reinforced polypropylene housing. Easy to use and maintain.



MAGNET S20 pH 8L/h and its complete kit ▪ up to 480m <sup>3</sup>	AYPO232008039A010
---	-------------------

MAGNET S20 Rx 8L/h and its complete kit ▪ up to 250m <sup>3</sup>	AYPO233008039A010
---	-------------------

# CONNECTED EQUIPMENT

## AvadyConnect® Communication Kit

The AvadyConnect® communication kit allows remote monitoring and control of the water treatment equipment parameters for an easy management of swimming pools, via the dedicated web interface [www.avadyconnect.com](http://www.avadyconnect.com).

The kit is composed of two elements:

- A box to be connected to the Ethernet network, allowing a radio communication (AvadyConnect® option)
- An extension to be implanted in the device to allow communication with the AvadyConnect® option

Compatible products: PROpilot pH® Rx (1.5l/h) / PROpilot pH® Rx (3l/h) / DUO pH® Rx (1.5-1.5l/h) / DUO pH Turboxy (1.5L/h-3L/h) / Pannels except PANmagnet

Avady Connect® Kit Option

AYAC100524

Remote control and monitoring:

- Water regulation; pH, Chlorine,
- Low level of treatment products\*,
- Temperature\*,
- Operation of the filtration pump and booster\*,
- Lighting\*,
- The state of the equipment: shutters\*,
- E-mail alert, advice.

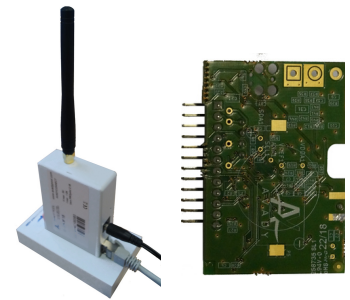
\* Depending on the device connected.

Swimming pool	Location	Equipment/Single serial number	Pool equipment
Les allées à la	Hydroxide (Hydroxide)	000000000000	0
Les allées à la	Hydroxide (Hydroxide)	000000000000	0
Les allées à la	Hydroxide (Hydroxide)	000000000000	0
Les allées à la	Hydroxide (Hydroxide)	000000000000	0
Les allées à la	Hydroxide (Hydroxide)	000000000000	0
Les allées à la	Hydroxide (Hydroxide)	000000000000	0
Les allées à la	Hydroxide (Hydroxide)	000000000000	0
Les allées à la	Hydroxide (Hydroxide)	000000000000	0
Les allées à la	Hydroxide (Hydroxide)	000000000000	0
Les allées à la	Hydroxide (Hydroxide)	000000000000	0

List of the pool park

Configuration	System	Admin. configuration
LES	Web configuration	
ALUE 1.4	lb.entity_high_alarm	Yes
TLET External pump	lb.entity_low_alarm	Yes
RATE 1.5 L/h	lb.entity_low_alarm	No
TYPE PROPORTIONAL		
TIME 40 s/0.1 Cl		
ARM 2.50 L/h		
ILED OFF		
DING 0.00 Cl		
RENT		
ARM		

pH and chlorine parameters can be changed remotely



One look is enough:  
Parameters in the green =  
Safe swimming!



Data history

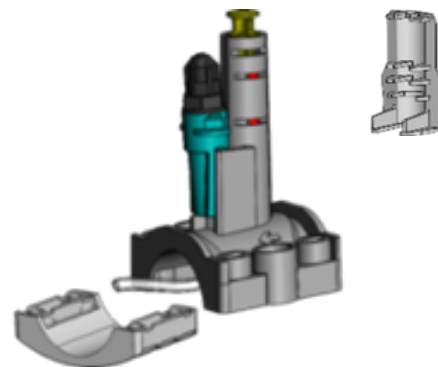
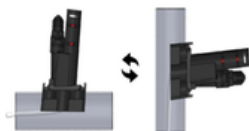


Discover the interface with  
the login and password  
"demo".

# EXCLUSIVE AVADY ACCESSORIES

## 2in1 Probe Holder

Single point for measurement and injection.  
Probe 100% protected by the Probe Holder tube.  
A winterization plug replaces the probe in the Probe Holder.  
Suitable for diameters 50 and 63.  
Horizontal or vertical mounting.

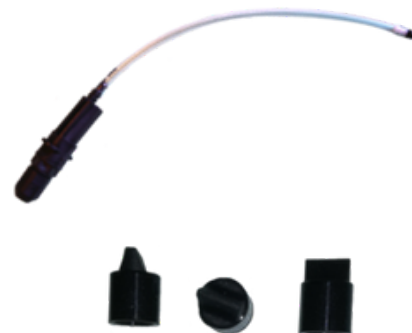


2in1 Probe Holder

AYFA00011

## CRISTALstop® Injector

Suitable for the 2 in 1 Probe Holder.  
Delays crystal formation at the chlorine injection point.  
Increases the life of the peristaltic pump.



CRISTALstop® Injector

AYFA00006

CRISTALstop® (x3) Maintenance Kit

AYAC100502

## Turboxy® Probe

The only amperometric probe capable of being installed directly on pipe.  
Chlorine measurement in ppm.  
Stabiliser tolerance up to 40ppm.  
Very easy to maintain.



  
Innovation Award  
Lyon 2016

Turboxy® Amperometric Probe

AYAC08F00



Scan to discover our exclusive  
accessories!

# EXCLUSIVE AVADY ACCESSORIES

## Turboxy® Remote tube kit

Facilitates the installation of the Turboxy probe and allows installation in DN63. Allows to control the speed of water flow through the Turboxy probe.

This kit is strongly recommended for an optimal use of the Turboxy® probe. It allows the correction of many problems such as a too low flow rate, head loss, or lack of space in the pipe.



Turboxy® Remote tube kit

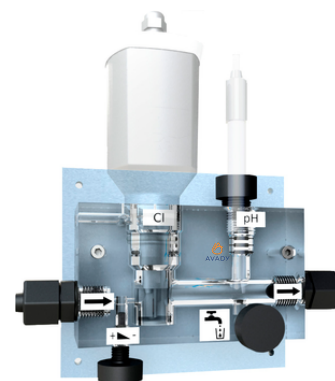
10000020

## Analysis chamber for Turboxy® pH and chlorine probes

Allows better management of the Turboxy® probe.

Allows sampling as close as possible to the probes.

\* Probes not supplied



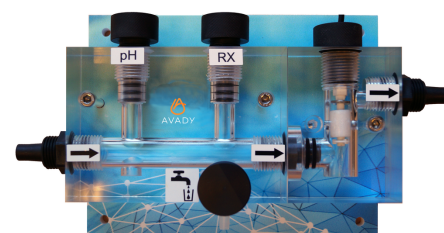
Analysis chamber for Turboxy® pH and chlorine probes

AYAC100486

## Analysis chamber for pH and Redox probes

Allows sampling as close to the probes as possible.

\* Probes not supplied



Analysis chamber without flow controller and its complete kit

AYAC100518

Analysis chamber with flow controller and its complete kit

AYAC100519



Scan to discover our exclusive accessories!



# ACCESSORIES

## Probes



1. pH probe 80mm long - 1m cable	AYAC08AB01
1. pH probe 80mm long - 5m cable (POOLeasy, Propilot, Duo pH Rx, Duo pH Turboxy)	AYAC08AC01
1. pH probe 120mm long - 1m cable (PANpilot, PANDuo, PANmagnet, Physico)	AYAC08AB00
1. pH probe 120mm long - 5m cable (PRIM pH, Magnet S20 pH)	AYAC08AC00
2. Rx probe 120mm long - 1m cable (PANpilot pH Rx, PANDuo pH Rx, PANmagnet, Physico pH Rx)	AYAC08BB00
2. Platinum Rx Probe 80mm long - 5m cable (POOLeasy Rx, Duo pH Rx)	AYAC08BC01
2. Platinum Rx Probe 120mm long - 5m cable (PRIM Rx, Magnet S20 Rx)	AYAC08BC00
2. Gold Rx Probe 120mm long - 5m cable (PROpilot, Chloriprotect)	AYAC08BC05
3. Turboxy® Amperometric Probe and Installation Kit	AYAC08F00
4. M12 CLM probe Free organic/inorganic chlorine with cable	AYAC08DG7
M12 CLM probe Free organic/inorganic chlorine without cable	AYAC08DG6
Cable for M12 CLM probe	AYAC100640

## Probe maintenance



1. pH/Rx probe cleaning solution 250mL	AYACSOLNET02
2. pH/Rx probe storage solution 100mL	AYACSOLSTK01
3. Calibration solution pH7 100mL	AYAC02C002
4. Calibration solution pH7 100mL	AYAC02C001
5. Calibration solution 475mV 100mL	AYAC02C004
6. Fresh and salt water gel for CLM probe	AYAC09AA0002
7. Membrane for CLM organic/inorganic free chlorine probe	AYAC09AA0001
8. Turboxy® Maintenance Kit	AYAC100347
8. Turboxy® Maintenance Kit Abrasive B10	10000019

# ACCESSORIES



1. 6*9mm Santoprene peristaltic tube (1,5L/h and 3L/h)	AYAC100152
1. 7*3mm Santoprene peristaltic tube (0,5L/h)	AYAC100179
1. 6,3*9,5mm Cristalsil tube - 140 mm long (1,5L/h)	AYAC100479
2. Injection valve 1/2" - 4*6 (peristaltic pump)	AYACAC0002
3. Magnet adapter valve for 2-in-1 probe holder injector	AYAC100285
4. Injection valve 1/2" and 3/8" - 4x6 and 10x14 (electromagnetic pump)	AYACAC0003
5. 1/2" insertion probe holder for 120 mm probe	AYAC09CF07
6. Foot strainer for Magnet pump	AYAC100005
7. Foot strainer for peristaltic pump	AYAC100020
8. Washable filter cartridge for panels	AYAC100541
9. Kit of 5 foams for quick connect filter	AYAC100638
10. Pump body 2-15L/h complete PVDF	AYAC1000036
Roller holder kit	AYAC100165



11. PVC Crystal pipe 10*14 (10m)	AYAC100204
11. PVC Crystal pipe 10*14 (50m)	AYAC100017
11. PVC Crystal pipe 4*6 (25m)	AYAC100018
11. PVC Crystal pipe 4*6 (100m)	AYAC100096
12. Polyethylene tube 10*14 (10m)	AYAC100129
12. Polyethylene tube 10*14 (50m)	AYAC100037
12. Polyethylene tube 4*6 (25m)	AYAC100016
12. Polyethylene tube 4*6 (100m)	AYAC100135
13. Polyethylene tube 8*10 (25m) for panel connection	AYAC100204



Scan to discover our accessories!

# SPARE PARTS



14. Polyethylene container I 60L	AYAC03A001
14. Polyethylene container I 100L	AYAC03A002
14. Polyethylene container I 200L	AYAC03A003
14. Polyethylene container I 300L	AYAC03A004
14. Polyethylene container I 500L	AYAC03A005
14. Polyethylene container I 1000L	AYAC03A006
15. Safety tank for 60 and 100L containers	AYAC04A001
15. Safety tank for 200L containers	AYAC04A002
15. Safety tank for 300 and 500L containers	AYAC04A004
15. Safety tank for 1000L containers	AYAC04A005
16. Suction pipe 4x6 H50 Jack plug	AYAC100353
16. Suction pipe 4x6 H80 Jack plug	AYAC100503
16. Suction pipe 4x6 H50 4-pole plug	AYAC100298
16. Suction pipe 4x6 H80 4-pole plug	AYAC100501



Scan to discover our spare  
parts!

# GENERAL TERMS AND CONDITIONS OF SALE

**1. PRICES** - Prices quoted are excluding VAT, transport or special packaging, unless otherwise agreed.

**2. DELIVERY** - Any delivery time or date indicated by the company, either in the offer or in the order confirmation response, shall be deemed to be a delivery date for guidance only. Whilst every effort must be made to deliver the goods on time, the company will not accept any liability for failure to deliver on time and cannot be held responsible for any loss or damage arising directly or indirectly from such failure, unless the company agrees in writing otherwise.

**3. PAYMENT** - The terms of payment shall be stipulated at the time of contract or by the offer of the company's General Terms and Conditions of Sale; no rounding off, subtraction or discount can be accepted without the prior written agreement of the company. The buyer shall not be entitled to suspend or retain any part of the payment as a counterclaim or for any dispute whatsoever, even if it is legitimate.

**4. CLAIMS** - Claims by the purchaser concerning the quantity, type and models of the goods delivered must be submitted within eight days of the date of receipt; claims concerning quality or damaged goods will only be considered by the company within eight days of the finding of the claim or defect. of the complaint or defect. The company undertakes to make every effort to replace or repair the goods as soon as soon as possible.

**5. WARRANTY** - The company provides a warranty on its products for a limited period of 1 year to 2 years depending on the product; this excludes any wear items such as: valves, seals, nozzles, tube nuts, tubes, filters, injection valves, check valves, glass components (electrodes). In addition, the warranty does not cover

a) Use of the equipment contrary to the company's instructions. a) use of the equipment contrary to the company's instructions. b) incorrect installation. c) improper repair, alteration and disassembly of the the equipment without the written permission of the company. d) Damage caused by natural and/or unexpected unexpected circumstances (e.g. thunder, fire, frost, etc.).

**6. RETURN OF GOODS** - The Company will accept the return of goods upon prior approval and written consent.

**7. DISTRIBUTION** - All returned goods must be accompanied by an official letter on the customer's letterhead and a delivery note. Under no circumstances will the company accept returned goods that do not comply with the not conform to the above indications. Any dispute relating to the terms of the conditions of sale shall be settled by the commercial court of Pontoise (95300) - France, according to the law and commercial practices in force.

-----  
WARNING - All products are manufactured in accordance with regulations. Standard power supply: 220/240 V / 50 - 60 Hz. Other power supplies on request. On request, CSA certification can be provided for some products (valid for USA and Canada).

About this document: We have tried to make this document complete and factual. We reserve the right to make changes at any time without notice to prices, colours, materials, specifications, models and availability. This document may have been updated since the date of printing.



95 520 OSNY  
FRANCE  
01 34 48 16 03



Information and pictures are not contractual.

[WWW.AVADYPOOL.COM](http://WWW.AVADYPOOL.COM)