



# AVADY



**RESPONSIBLE WATER PLEASURE**

## CATALOGUE 2024

French manufacturer of equipment  
for water treatment in  
SWIMMING POOLS and SPAS

[www.avadypool.com](http://www.avadypool.com)



# PRESENTATION OF THE COMPANY



**+ 10 YEARS  
OF EXPERIENCE**



**3 TIMES  
BEST SUPPLIER SCP**



**98%  
PRODUCTION IN  
FRANCE**



**MORE THAN 21,000  
PUMPS SOLD  
IN 2023**



Drawing on more than 10 years' experience, Avady designs, develops and assembles products that meet the needs and wishes of private individuals and professionals. Avady is committed to designing equipment that simplifies users' daily lives, while ensuring that its environmental impact is as neutral as possible.



**AVADY**



# LES SERVICES AVADY



Return rate  
= 0,45 %



Free technical  
support



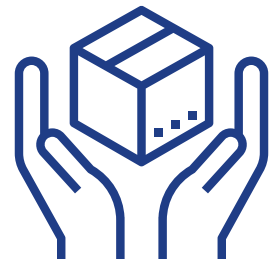
Commercial & Technical  
Training



More than 350  
technical videos



Responsive after-  
sales service  
= 48h max



Products tailored to the  
needs of installers



Scan to see our technical videos!





# SUMMARY

Our 2024 product range.....	5
Focus Electrolysers.....	7
Private Pools.....	8
Private and Public swimming pools.....	11
Public Pools.....	15
Pumps.....	17
Connected equipment.....	18
Exclusive Avady accessories.....	19
Accessories.....	21
Spare parts.....	23
General terms and conditions of sale.....	24





# OUR 2024 PRODUCT RANGE

Private Pools  
Public Pools

Device	Pool volume	Private SPAS	Publics SPAS	O2	RX (Cl/mv)	Cl (ppm, mg/l)	pH
TEMPO UV	≤ 150m <sup>3</sup> (O2) ≤ 80m <sup>3</sup> (chlorine)			Timer		Timer	
PRIM pH	≤ 120m <sup>3</sup>						✓
PRIM Rx	≤ 60m <sup>3</sup>				✓		
ChloriProtect Rx	Yes				✓		
POOLEasy pH	≤ 150m <sup>3</sup>	✓					✓
POOLEasy Rx	≤ 80m <sup>3</sup>	✓			✓		
PROpilot pH Rx (1,5/h)	≤ 150m <sup>3</sup>	✓			✓		✓
PROpilot pH Rx (3/h)	≤ 280m <sup>3</sup>	✓			✓		✓
DUO pH Rx (1,5-3L/h)	≤ 150m <sup>3</sup> ≤ 90m <sup>3</sup>	✓			✓		✓
DUO pH Turboxy® (1,5-3L/h)	15 to 150m <sup>3</sup> 15 to 90m <sup>3</sup>					✓	✓
PANduo pH Rx	≤ 150m <sup>3</sup> ≤ 90m <sup>3</sup>				✓		✓
PANduo pH Turboxy® (1,5-3L/h)	15 to 150m <sup>3</sup> 15 to 90m <sup>3</sup>					✓	✓
PANduo pH CLM (1,5L/h-1,5L/h)	≤ 30m <sup>3</sup>	≤ 30m <sup>3</sup>	≤ 30m <sup>3</sup>			✓	✓
PANpilot pH Rx S20 (3-8L/h)	30 to 300m <sup>3</sup> 30 to 220m <sup>3</sup>				✓		✓
PANpilot pH Turboxy® S20 (3-8L/h)	15 to 300m <sup>3</sup> 15 to 220m <sup>3</sup>					✓	✓
PANmagnet pH Rx S20 (8-8L/h)	30 to 450m <sup>3</sup> 30 to 250m <sup>3</sup>				✓		✓
Physico pH® Rx	30 to 300m <sup>3</sup>				✓		✓
Physico pH® Turboxy®	15 to 1500m <sup>3</sup>					✓	✓
Physico pH® CLM	≤ 1500m <sup>3</sup>	✓	✓			✓	✓
MAGNET S20 pH (8l/h)	30 to 900m <sup>3</sup> 30 to 450m <sup>3</sup>						✓
MAGNET S20 Rx (8l/h)	30 to 450m <sup>3</sup> 30 to 250m <sup>3</sup>				✓		
PROpilot SALT	45 to 175 m <sup>3</sup>				✓		✓
POOLEasy SALT	45 to 175 m <sup>3</sup>						



# OUR 2024 PRODUCT RANGE

Appareil	Proportional dosing	Max stabiliser rate	Linked to a salt chlorinator	Digital display	Temperature display	Alarm	WEB interface	Warranty (2 years)	pH/Rx probe warranty (1 year)
TEMPO UV				✓				✓	
PRIM pH	✓			✓		Mini-maxi		✓	
PRIM Rx	✓	15 ppm		✓		Mini-maxi		✓	
ChloriProtect Rx		15 ppm	✓	✓		Mini-maxi		✓	
POOLeasy pH	✓			✓		Volumetric		✓	✓
POOLeasy Rx	✓	15 ppm		✓		Volumetric		✓	✓
PROpilot pH Rx (1,5l/h)	✓	15 ppm	✓	✓		Volumetric	Option	✓	✓
PROpilot pH Rx (3l/h)	✓	15 ppm	✓	✓		Volumetric	Option	✓	✓
DUO pH Rx (1,5-3L/h)	✓	15 ppm		✓		Volumetric	Option	✓	
DUO pH Turboxy® (1,5-3L/h)	✓	40 ppm		✓	✓	Volumetric	Option	✓	✓
PANduo pH Rx	✓	40 ppm		✓	Option	Volumetric	Option	✓	✓
PANduo pH Turboxy®(1,5-3L/h)	✓	40 ppm		✓	✓	Volumetric	Option	✓	✓
PANduo pH CLM (1,5L/h-1,5L/h)	✓	80 ppm		✓	Option	Volumetric	Option	✓	✓
PANpilot pH Rx S20(3-8L/h)	✓	15 ppm		✓	Option	Volumetric	Option	✓	✓
PANpilot pH Turboxy® S20 (3-8L/h)	✓	40 ppm		✓	✓	Volumetric	Option	✓	✓
PANmagnet pH Rx S20 (8-8L/h)	✓	15 ppm		✓		Timed		✓	✓
Physico pH® Rx	✓	40 ppm	✓	✓	Option	Volumetric	Option	✓	✓
Physico pH® Turboxy®	✓	40 ppm		✓	✓	Volumetric	Option	✓	
Physico pH® CLM	✓	80 ppm	✓	✓	Option	Volumetric	Option	✓	✓
MAGNET S20 pH (8l/h)	✓			✓	✓	Timed		✓	
MAGNET S20 Rx (8l/h)	✓	15 ppm		✓	✓	Timed		✓	
PROpilot SALT	✓	15 ppm	✓	✓	✓	Timed		✓	✓
POOLeasy SALT			✓	✓		Timed		✓	

# Our Electrolysis 2024 offer

## Avady Pool reliability and innovation at the service of electrolysis



### Pooleasy Salt / Propilot Salt :

- **Efficient:** constant chlorine production whatever the circumstances (worn cell, low salt, etc.)
- **Practical:** cell with connection for 2 accessories (flow sensor, pH injection)
- **Upgradeable:** combined salt/pH unit that can be upgraded with a Plug & Play Redox kit to optimise chlorine production
- **Eco-responsible:** two production modes  
**Normal** (2.5g/l) and **Low salinity** (1.5g/l) available

**Normal Salt** (45 to 175 m<sup>3</sup>) / **Low Salt** (35 to 145m<sup>3</sup>)



[www.avadypool.com](http://www.avadypool.com)



# PRIVATE POOLS

## PROpilot SALT

- Operates from 1.5 g/L salt (in low salinity mode)
- Power Control technology: constant chlorine production whatever the conditions (worn cell, low salt, etc.)
- Memory polarity reversal, adjustable according to water hardness (2h to 24h)
- Proportional pH control in acid or base mode (pH - or +)
- Automatic wintering and restart from 15°C
- Displays water temperature, salt level and cell life
- 2-in-1 probe holder included
- Suitable for pools from 45 to 175m<sup>3</sup> depending on the model



PROpilot SALT pH 9 / 7 g/h - 45 / 35m<sup>3</sup> max volume  
PROpilot SALT pH 16 / 12 g/h - 80 / 60m<sup>3</sup> max volume  
PROpilot SALT pH 26 / 18 g/h - 130 / 90m<sup>3</sup> max volume  
PROpilot SALT pH 35 / 29 g/h - 175 / 145m<sup>3</sup> max volume

ELPHY23AYSA-G4HX09  
ELPHY23AYSA-G4HX16  
ELPHY23AYSA-G4HX26  
ELPHY23AYSA-G4HX35

## POOLEasy SALT

- Operates from 1.5 g/L salt (in low salinity mode)
- Power Control technology: constant chlorine production whatever the conditions (worn cell, low salt, etc.)
- Transparent cell to accommodate a flow sensor (optional) and pH injection (additional)
- Boost mode for superchlorination for 24 hours
- Suitable for pools from 45 to 175m<sup>3</sup> depending on the model

POOLEasy 9 / 7 g/h - 45 / 35m<sup>3</sup> max volume  
POOLEasy 16 / 12 g/h - 80 / 60m<sup>3</sup> max volume  
POOLEasy 26 / 18 g/h - 130 / 90m<sup>3</sup> max volume  
POOLEasy 35 / 29 g/h - 175 / 145m<sup>3</sup> max volume

ELLY23AYSB-G0HX09  
ELLY23AYSB-G0HX16  
ELLY23AYSB-G0HX26  
ELLY23AYSB-G0HX35



See all our appliances designed for private pools!

# PISCINES PRIVÉES

## TEMPO UV®

Universal timed doser that injects active oxygen, chlorine or flocculant.

Suitable for pools  $\leq 150\text{m}^3$  ( $\text{O}_2$ ) |  $\leq 80\text{m}^3$  (chlorine)

TEMPO UV® and its complete kit

AYPO15003



## PRIM® pH ou Rx

Proportionally regulates the pH- or pH+ or chlorine concentration (mV) of the pool in the Rx version.

A threshold alarm allows the pump to stop if the value is too low or too high and displays the status.

Suitable for pools of 10 to 120m<sup>3</sup> (pH) | 10 to 60m<sup>3</sup> (chlorine)

PRIM® pH and its complete kit

AYPO15001

PRIM® Rx and its complete kit

AYPO15002



## ChloriProtect® Rx

Secures chlorine production from the salt chlorinator and protects equipment such as bar covers, roller shutters or liners.

Displays chlorine levels in mV.

Chloriprotect® Rx and its complete kit

AYPO15009



See all our appliances designed for private pools!

# PRIVATE POOLS

## POOLEasy® pH/Rx

Automatically regulates pH or chlorine (mV).

Equipped with a 2-in-1 injector probe holder that can be installed horizontally or vertically and fits diameters 50 and 63.

Volumetric alarm prevents the chemical container from being emptied.

Suitable for pools from 1 to 150m<sup>3</sup> (pH version) | From 1 to 80m<sup>3</sup> (Rx version)

POOLEasy® pH and its complete kit

AYPO16001

POOLEasy® Rx and its complete kit

AYPO16003



## PROpilot pH® Rx

Simultaneously regulates pH and chlorine (mV).

External chlorine injection via activation of either a pump, an electrolyser or a solenoid valve.

Fitted with two 2-in-1 injector probe holders that can be installed horizontally or vertically and fit diameters 50 and 63.

Volumetric alarm prevents emptying of the chemical container.

Optional AvadyConnect® communication kit: data consultation and remote control on [www.avadyconnect.com](http://www.avadyconnect.com) (p18).

Suitable for tanks from 1 to 150m<sup>3</sup> (1.5L/h) | From 1 to 280m<sup>3</sup> (3L/h)

PROpilot pH® Rx 1,5L/h and its complete kit

AYPO16002

PROpilot pH® Rx 3L/h and its complete kit

AYPO16004

Avady Connect® Kit option

AYAC100524



See all our appliances designed for private pools!



# PRIVATE AND PUBLIC SWIMMING POOLS

## DUO pH Rx (1,5-3L/h)

Simultaneously regulates and injects pH and chlorine (mV).

Integrated pumps: pH 1.5 L/h and chlorine 3 L/h.

Fitted with two 2-in-1 injector probe holders that can be installed horizontally or vertically and fit diameters 50 and 63.

Volumetric alarm prevents emptying of the chemical container.

Optional AvadyConnect® communication kit: data consultation and remote control on [www.avadyconnect.com](http://www.avadyconnect.com) (p18).

Suitable for private pools  $\leq 150\text{m}^3$ .

Suitable for public pools  $\leq 90\text{m}^3$

Suitable for guest houses, residences, holiday homes.



DUO pH Rx (1,5-3L/h) and its complete kit  
Avady Connect® Kit option

AYPO16132  
AYAC100524

## DUO pH Turboxy (1,5-3L/h)

Simultaneously regulates and injects pH and chlorine (ppm - amperometric probe).

Turboxy sensor: displays water temperature + measures flow rate

Integrated pumps: pH 1.5 L/h and chlorine 3 L/h.

Fitted with a 2-in-1 injector probe holder that can be installed horizontally or vertically and fits diameters 50 and 63.

The Turboxy probe flange is suitable for horizontal DN50 installation only or use the Turboxy remote tube kit.

Volumetric alarm prevents emptying of the chemical container.

Optional AvadyConnect® communication kit: data consultation and remote control on [www.avadyconnect.com](http://www.avadyconnect.com) (p18).

Suitable for private pools from 15 to  $150\text{m}^3$ , public pools from 15 to  $90\text{m}^3$ , hotels, residences and holiday homes.



Duo pH Turboxy (1,5-3L/h) and its complete kit  
Avady Connect® Kit option

AYPO16127  
AYAC100524

# PRIVATE AND PUBLIC SWIMMING POOLS

## PANduo pH Rx (1,5-3L/h)

Simultaneously regulates and injects pH and chlorine (mV).

Integrated pumps: pH 1.5 L/h and chlorine 3 L/h.

Optional water temperature.

Analysis chamber for easy monitoring and maintenance and maintenance.

Sample-taking facility makes manual analysis easy.

Volumetric alarm prevents the chemical container from being emptied.

Unit predisposed to receive the AvadyConnect® option: consultation of data and remote control on [www.avadyconnect.com](http://www.avadyconnect.com) (p18).

Suitable for private pools  $\leq 150\text{m}^3$ .

Suitable for public pools  $\leq 90\text{m}^3$

Suitable for guest houses, residences, holiday cottages, etc.

PANduo pH Rx (1,5-3L/h) and its complete kit	AYPA1221
Avady Connect® Kit option	AYAC100524



Option Avady Connect

## PANduo pH Turboxy (1,5-3L/h)

Simultaneously regulates and injects pH and chlorine (ppm - amperometric amperometric probe).

Integrated pumps: pH 1.5 L/h and chlorine 3 L/h.

Turboxy sensor: displays water temperature + detects flow rate.

Analysis chamber for simplified monitoring and maintenance and optimum use of the Turboxy probe.

Its sample-taking function facilitates mandatory manual analyses.

Volumetric alarm prevents the chemical container from being emptied.

Unit predisposed to receive the AvadyConnect® option: remote data consultation and remote piloting on [www.avadyconnect.com](http://www.avadyconnect.com) (p18).

Meets the requirements of the French Health Agency (ARS).

Suitable for private pools  $\leq 150\text{m}^3$ .

Suitable for public pools  $\leq 90\text{m}^3$ .

Suitable for hotels and residences.

PANduo pH Turboxy (1,5-3L/h) and its complete kit	AYPA1216
Avady Connect® Kit option	AYAC100524



Option Avady Connect

# PRIVATE AND PUBLIC SWIMMING POOLS

## PANduo pH CLM (1,5-1,5L/h)

Simultaneously regulates and injects pH and chlorine (ppm - closed ammeter probe/membrane amperometric probe / membrane).

Integrated pumps: pH 1.5 L/h and chlorine 1.5 L/h.

Optional water temperature.

Analysis chamber for easy monitoring and simplified maintenance.

Its sample-taking system makes manual analyses easy.

Volumetric alarm prevents the chemical container from being emptied.

Device predisposed to receive the AvadyConnect® option: consultation of data and remote control on [www.avadyconnect.com](http://www.avadyconnect.com) (p18).

Meets the requirements of the French Health Agency (ARS).

Suitable for public pools and spas  $\leq 30\text{m}^3$ .

Suitable for hotels and residences.

PANduo pH CLM (1,5-1,5L/h) and its complete kit	AYPA1219
Avady Connect® Kit option	AYAC100524
Temperature option	AYAC100605



Option Avady Connect

## PANpilot pH Rx S20 (3-8L/h)

Simultaneously regulates and injects pH and chlorine (mV).

Integrated pumps: pH 3L/h and chlorine 8L/h.

Combines the best of dosing pump technology: peristaltic for pH and electromagnetic for pH and electromagnetic for chlorine (mV).

Optional water temperature.

Analysis chamber for easy monitoring and simplified maintenance.

Its sample-taking system facilitates mandatory manual analyses.

Volumetric alarm prevents the chemical container from being emptied.

Device predisposed to receive the AvadyConnect® option: consultation of data and remote control on [www.avadyconnect.com](http://www.avadyconnect.com) (p18).

Suitable for private pools from 30 to 300m<sup>3</sup>.

Suitable for public pools from 30 to 220m<sup>3</sup>.

Suitable for campsites, hotels, residences and requiring little stabiliser.

PANpilot pH Rx S20 (3-8L/h) and its complete kit	AYPA1207
Avady Connect® Kit option	AYAC100524
Temperature Option	AYAC100605



Option Avady Connect



# PRIVATE AND PUBLIC SWIMMING POOLS

## PANpilot pH Turboxy S20 (3-8L/h)



Option Avady  
Connect

Simultaneously regulates and injects pH and chlorine (ppm - amperometric probe).

Integrated pumps: pH 3L/h and chlorine 8L/h.

Combines the best of metering pump technology: peristaltic for pH and electromagnetic for chlorine (ppm).

Turboxy sensor: displays water temperature + detects flow rate.

The analysis chamber simplifies monitoring, simplified maintenance and optimum use of the Turboxy probe.

Its sample-taking function facilitates mandatory manual analyses.

Volumetric alarm prevents the chemical container from being emptied.

Unit predisposed to receive the AvadyConnect® option: consultation of data and remote control on [www.avadyconnect.com](http://www.avadyconnect.com) (p18).

Meets the requirements of the French Health Agency (ARS).

Suitable for private pools  $\leq 300\text{m}^3$ .

Suitable for public pools  $\leq 220\text{m}^3$

Suitable for campsites, hotels and residences.



PANpilot pH Turboxy S20 (3-8L/h) and its complete kit  
Avady Connect® Kit option

AYPA1217  
AYAC100524

## PANmagnet® pH Rx S20 (8-8L/h)

Simultaneously regulates and injects pH and chlorine (mV).

Integrated pumps: pH 8L/h and chlorine 8L/h.

Robust electromagnetic pumps.

Pumps fitted with a noise reduction device.

Analysis chamber for easy monitoring and simplified maintenance.

Sample-taking system facilitates manual analysis.

Volumetric alarm prevents the chemical container from being emptied.

Suitable for private ponds from 30 to 450m<sup>3</sup>.

Suitable for public ponds from 30 to 250m<sup>3</sup>.

Suitable for campsites, hotels and residences requiring little stabiliser.



PANmagnet® pH Rx S20 (8-8L/h) and its complete kit

AYPA1009

# PUBLIC POOLS

## Physico pH® Rx

Simultaneously regulates pH, chlorine or bromine (mV).

Optional water temperature.

Analysis chamber for easy monitoring and simplified maintenance.

Its sample-taking system makes manual analyses easy.

Volumetric alarm prevents the chemical container from being emptied.

Unit predisposed to receive the AvadyConnect® option: consultation of data and remote control on [www.avadyconnect.com](http://www.avadyconnect.com) (p18).

Meets the requirements of the French Health Agency (ARS).

Suitable for public pools up to 1500m<sup>3</sup>.

Physico pH® Rx and its complete kit  
Avady Connect® Kit option  
Temperature option

AYPA1212  
AYAC100524  
AYAC100605



Option Avady Connect



## Physico pH® Turboxy

Simultaneously regulates and injects pH and chlorine (ppm - amperometric probe).

Turboxy probe: displays water temperature + detects flow rate.

The analysis chamber simplifies monitoring and maintenance and optimum use of the Turboxy probe.

Its sample-taking function facilitates mandatory manual analyses.

Volumetric alarm prevents the chemical container from being emptied.

Unit predisposed to receive the AvadyConnect® option: consultation of data and remote control on [www.avadyconnect.com](http://www.avadyconnect.com) (p18).

Meets the requirements of the French Health Agency (ARS).

Suitable for public pools up to 1500m<sup>3</sup>.

Physico pH® Turboxy and its complete kit  
Avady Connect® Kit option

AYPA1202  
AYAC100524



Option Avady Connect



# PUBLIC POOLS

## Physico pH® CLM

Simultaneously regulates pH and chlorine (ppm - closed amperometric probe / membrane).

Optional water temperature.

The analysis chamber simplifies monitoring and maintenance. Its sample-taking system facilitates mandatory manual analyses. Volumetric alarm prevents the chemical container from being emptied.

Unit predisposed to receive the AvadyConnect® option: data consultation and remote control on [www.avadyconnect.com](http://www.avadyconnect.com) (p18). Meets the requirements of the French Health Agency (ARS).

Suitable for public pools  $\leq 1500\text{m}^3$ .  
Suitable for campsites, hotels, residences, spas, etc.



Option Avady Connect



Physico pH® CLM and its complete kit  
Avady Connect® Kit option  
Temperature Option

AYPA1218  
AYAC100524  
AYAC100605



See all our appliances designed for public pools!

# DOSING PUMPS

## Pumps PeriFix

Compact, reliable and easy-to-use peristaltic dosing pump (incompatible with hydrochloric acid)



PeriFix 1.5L/h and its complete kit - up to 50 m <sup>3</sup>	AYPO15017
PeriFix 3L/h and its complete kit - up to 80 m <sup>3</sup>	AYPO15020

## Pumps MAGNET

Electromagnetic dosing pumps which, when coupled with a pH or chlorine regulator, automatically dose the products used to treat swimming pool water. Acid-proof, reinforced polypropylene casing. Easy to use and maintain.



MAGNET S10 2L/h at 3 bars and its complete kit ▪ up to 60m <sup>3</sup> (int); 40m <sup>3</sup> (ext)	AYPO241002039A020
---	-------------------

MAGNET S10 6L/h at 3 bars and its complete kit ▪ up to 180m <sup>3</sup> (int); 120m <sup>3</sup> (ext)	AYPO241006039A020
---	-------------------



MAGNET S20 8L/h at 3 bars and its complete kit ▪ up to 300 m <sup>3</sup> (int); 120 m <sup>3</sup> (ext)	AYPO231008039C030
---	-------------------

MAGNET S20 12L/h at 3 bars and its complete kit - up to 400 m <sup>3</sup> (int) ; 360 m <sup>3</sup> (ext)	AYPO231012039C010
---	-------------------



MAGNET S40 50L/h at 3 bars and its complete kit ▪ up to 1500m <sup>3</sup>	AYPO281050037C010
--	-------------------

## Pompes INSTRUMENT pH/Rx

Electromagnetic dosing pumps for proportional dosing of products used to treat swimming pool water. Backlit display. Acid-proof, reinforced polypropylene casing. Easy to use and maintain.



MAGNET S20 pH 8L/h and its complete kit ▪ up to 480m <sup>3</sup>	AYPO232008039A010
---	-------------------

MAGNET S20 Rx 8L/h and its complete kit ▪ up to 250m <sup>3</sup>	AYPO233008039A010
---	-------------------

# CONNECTED EQUIPMENT

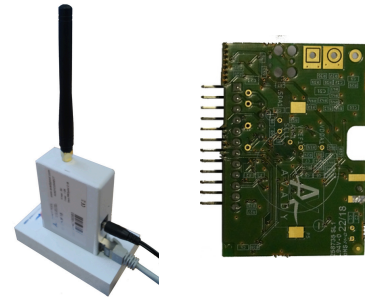
## AvadyConnect® communication kit

The AvadyConnect® communication kit enables remote monitoring and control of water treatment equipment parameters for easy pool management, via the dedicated web interface [www.avadyconnect.com](http://www.avadyconnect.com).

The Kit consists of two elements:

- A box to be connected to the Ethernet network, enabling radio communication (AvadyConnect® option)
- An extension to be installed in the appliance to enable communication with the AvadyConnect® option.

Compatible products: PROpilot pH® Rx (1.5l/h) / PROpilot pH® Rx (3l/h) / DUO pH® Rx (1.5-1.5l/h) / DUO pH Turboxy (1.5L/h-3L/h) / Panels except PANmagnet



Avady Connect® Kit option

AYAC100524

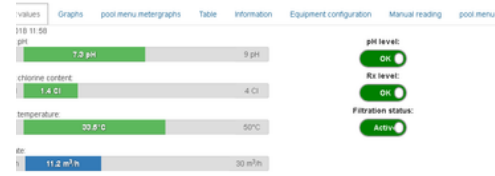
### Remote control and monitoring:

- Water regulation; pH, Chlorine,
- Low level of treatment products,\*
- Temperature\*,
- The operation of the filtration pump and booster\*,
- Lighting\*,
- Equipment status: shutters\*,
- E-mail alerts, advice.

\* Depending on the device connected.

Swimming pool	Customer	Developmental Single serial number	Pool element
My pool 1	Thomas Thomas	0000000001	1
My pool 2	Thomas Thomas	0000000002	1
My pool 3	Thomas Thomas	0000000003	1
My pool 4	Thomas Thomas	0000000004	1
My pool 5	Thomas Thomas	0000000005	1
My pool 6	Thomas Thomas	0000000006	1
My pool 7	Thomas Thomas	0000000007	1
My pool 8	Thomas Thomas	0000000008	1
My pool 9	Thomas Thomas	0000000009	1
My pool 10	Thomas Thomas	0000000010	1

List of basins



One look is all it takes:  
Green parameters =  
Relaxed swimming!

CI configuration System Admin configuration

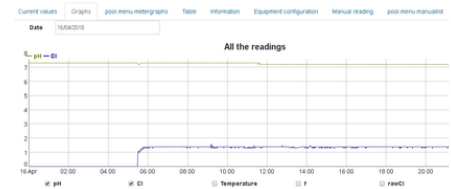
Web configuration

ALUE 1.4	lb.entity.high_alarm Yes
TLET External pump	lb.entity.low_alarm Yes
RATE 1.5 L/h	lb.entity.lvl_alarm No
TYPE PROPORTIONAL	
TIME 40 s @ 1 Cl	
ARM 2.50 L/h	
BLED OFF	
DING 0.00 Cl	
RENT	
ARM No	

pH and chlorine parameters can be changed remotely



Discover the interface with the "demo" login and password.



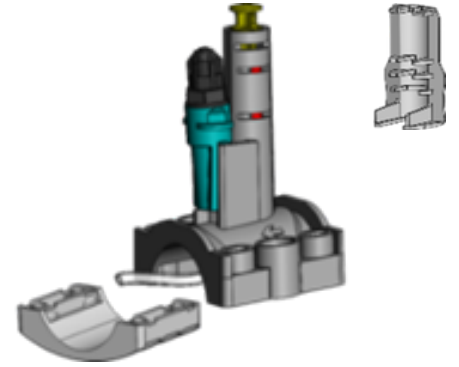
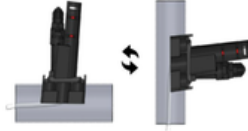
Data history



# EXCLUSIVE AVADY ACCESSORIES

## 2 in 1 probe holder

Single point for measurement and injection.  
Probe 100% protected by Probe Holder tube.  
A wintering plug replaces the probe in the Probe Holder.  
Fits diameters 50 and 63.  
Horizontal or vertical mounting.



2 in 1 probe holder

AYFA00011

## Injector CRISTALstop®

Suitable for 2-in-1 Probe Holder.  
Delays crystal formation at the chlorine injection point.  
Increases the life of the peristaltic pump.



Injector CRISTALstop®

AYFA00006

Maintenance kit CRISTALstop® (x3)

AYAC100502

## Turboxy® probe

The only amperometric probe that can be installed directly in a pipe.  
Chlorine reading in ppm.  
Stabiliser tolerance up to 40ppm.  
Easy to maintain.



Innovation Grand Prize  
Lyon 2016

Turboxy® amperometric probe

AYAC08F00



Scan to discover our exclusive  
accessories!

# EXCLUSIVE AVADY ACCESSORIES

## Turboxy® remote tube kit

Facilitates installation of the Turboxy probe and allows DN63 installation. Allows you to control the speed at which water passes through the Turboxy® probe.

This kit is highly recommended for optimum use of the Turboxy® probe. It can be used to correct a number of problems, such as low flow rate, loss of head or lack of space in the pipe.



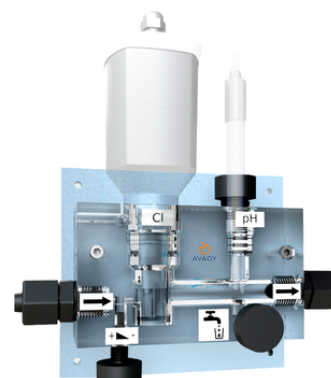
Turboxy® remote tube kit

10000020

## Analysis chamber for Turboxy® pH and chlorine probes

Better management of the Turboxy® probe.  
Allows samples to be taken as close as possible to the probes.

\* Probes not supplied



Turboxy® analysis chamber and complete kit

AYAC100486

## Analysis chamber for pH and ORP probes

Allows samples to be taken as close as possible to the probes.

\* Probes not supplied



Analysis chamber without flow controller and its complete kit

AYAC100518

Analysis chamber with flow controller and its complete kit

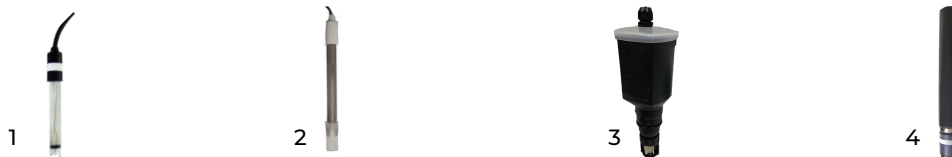
AYAC100519



Scan to discover our exclusive accessories!

# ACCESSORIES

## Probes



1. pH probe 80mm long - 1m cable	AYAC08AB01
1. pH probe 80mm long - 5m cable (POOLEasy, Propilot, Duo pH Rx, Duo pH Turboxy)	AYAC08AC01
1. pH probe 120mm long - 1m cable (PANpilot, PANduo, PANmagnet, Physico)	AYAC08AB00
1. pH probe 120mm long - 5m cable - Câble 5m (PRIM pH, Magnet S20 pH)	AYAC08AC00
2. Rx probe 120mm long - 1m cable (PANpilot pH Rx, PANduo pH Rx, PANmagnet, Physico pH Rx)	AYAC08BB00
2. Platinum Rx probe Length 80mm - 5m cable (POOLEasy Rx, Duo pH Rx)	AYAC08BC01
2. Platinum Rx probe 120mm long - 5m cable (PRIM Rx, Magnet S20 Rx)	AYAC08BC00
2. Gold Rx probe Length 120mm - 5m cable (PROpilot, Chloriprotect)	AYAC08BC05
3. Turboxy® amperometric probe and installation kit	AYAC08F00
4. CLM M12 organic/inorganic free chlorine probe with cable	AYAC08DG7
CLM M12 organic/inorganic free chlorine probe without cable	AYAC08DG6
Cable for CLM M12 probe 0.7M	AYAC100670

## Sensor maintenance



1. pH/Rx probe cleaning solution 250mL	AYACSOLNET02
2. pH/Rx probe storage solution 100mL	AYACSOLSTK01
3. pH7 standard solution 100mL	AYAC02C002
4. pH4 standard solution 100mL	AYAC02C001
5. 475mV 100mL standard solution	AYAC02C004
6. Fresh and salt water gel for CLM probe	AYAC09AA0002
7. Membrane for CLM organic/inorganic free chlorine probe	AYAC09AA0001
8. Turboxy® maintenance kit	AYAC100347
8. Turboxy® maintenance kit Abrasive B10	10000019

# ACCESSORIES



1. Santoprene 6*9mm peristaltic tube (1.5L/h and 3L/h)	AYAC100152
1. Santoprene 7*3mm peristaltic tube (0.5L/h)	AYAC100179
1. Cristalsil tube 6.3*9.5mm - length 140mm (1.5L/h)	AYAC100479
2. Injection valve 1/2" - 4*6 (peristaltic pump)	AYACAC0004
3. Magnet adapter valve for 2-in-1 probe holder injector	AYAC100285
4. Injection valve 1/2" and 3/8" - 4x6 and 10x14 (electromagnetic pump)	AYACAC0003
5. 1/2" insertion probe holder for 120 mm probe	AYAC09CF07
6. Foot strainer for Magnet pump	AYAC100005
7. Foot strainer for peristaltic pump	AYAC100020
8. Washable filter cartridge for panels	AYAC100541
9. Kit of 5 foams for quick-fit protection filter	AYAC100638
10. Pump body 2-15L/h complete PVDF	AYAC100036
Roller holder kit	AYAC100165



11. Crystal PVC pipe 10*14 (10m)	AYAC100204
11. Crystal PVC pipe 10*14 (50m)	AYAC100017
11. Crystal PVC pipe 4*6 (25m)	AYAC100018
11. Crystal PVC pipe 4*6 (100m)	AYAC100069
12. Polyethylene tube 10*14 (10m)	AYAC100129
12. Polyethylene tube 10*14 (50m)	AYAC100037
12. Polyethylene tube 4*6 (25m)	AYAC100016
12. Polyethylene tube 4*6 (100m)	AYAC100135
13. Polyethylene tube 8*10 (25m) for panel connection	AYAC100204



Scan to discover our accessories!

# SPARE PARTS



14. Polyethylene tank I 50L	AYAC03A007
14. Polyethylene tank I 100L	AYAC03A002
14. Polyethylene tank I 200L	AYAC03A003
14. Polyethylene tank I 300L	AYAC03A004
14. Polyethylene tank I 500L	AYAC03A005
14. Polyethylene tank I 1000L	AYAC03A006
15. Safety tank for 60 and 100 litre tanks	AYAC04A001
15. Safety tank for 200L tank	AYAC04A002
15. Safety tank for 300 and 500 litre tanks	AYAC04A004
15. Safety tank for 1000L tank	AYAC04A005
16. Suction pipe 4x6 H50 with Jack plug	AYAC100353
16. Suction pipe 4x6 H80 with Jack plug	AYAC100503
16. Suction pipe 4x6 H50 4-pole socket	AYAC100298
16. Suction pipe 4x6 H0 4-pole socket	AYAC100501



Scan to find out more about  
our spare parts!



# CONDITIONS GÉNÉRALES DE VENTE

**1. RATES** - Prices quoted are exclusive of VAT, carriage and special packaging, unless otherwise agreed.

**2. DELIVERY** - Any delivery time or date indicated by the company, either in the offer or in the order confirmation reply, will be considered as a delivery date, for information purposes only. Whilst every effort must be made to deliver the goods on time, the company will not accept any liability for failure to deliver on time and cannot be held responsible for any loss or damage arising directly or indirectly from such failure, unless otherwise agreed by the company in writing.

**3. PAYMENT** - Les conditions de paiement seront stipulées au moment du contrat ou par l'offre des Conditions Générales de Vente de la société ; aucun arrondi de réduction, de soustraction ou d'escompte ne peuvent être acceptés sans accord écrit préalable de la société. L'acheteur ne pourra suspendre ou conserver toute partie du paiement à titre de demande reconventionnelle ou pour toute contestation quelle qu'elle soit, même si elle est légitime.

**4. CLAIMS** - The terms of payment will be stipulated at the time of the contract or by the offer of the company's General Terms and Conditions of Sale; no rounding off, reduction, subtraction or discount may be accepted without the company's prior written agreement. The purchaser may not suspend or retain any part of the payment as a counterclaim or for any dispute whatsoever, even if legitimate.

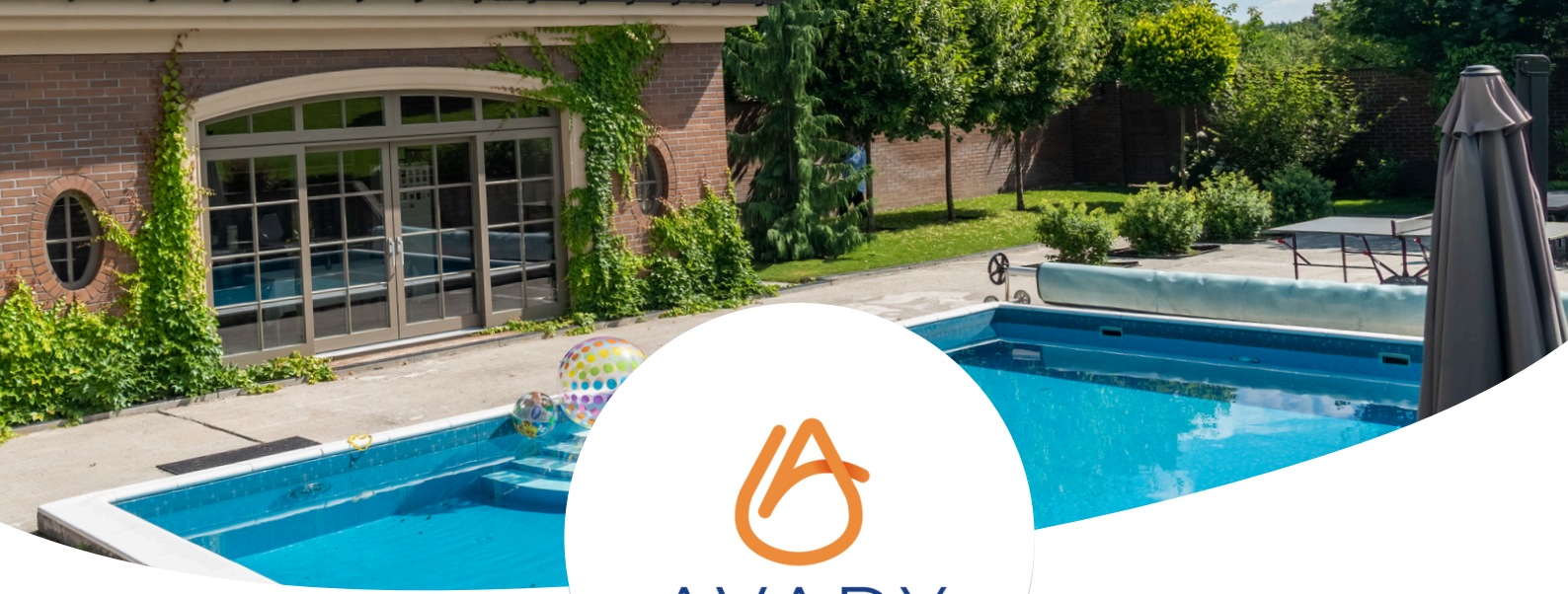
**5. WARRANTY** - The company provides a guarantee on its products for a limited period of 1 to 2 years, depending on the product; this excludes all wear items such as: valves, seals, nipples, tube nuts, tubes, filters, injection valves, non-return valves, glass components (electrodes). In addition, the warranty does not cover goods damaged as a result of: a) Use of the equipment contrary to the company's instructions. b) Incorrect installation. c) Repair, alteration and improper dismantling of the equipment without the company's written authorisation. d) Damage caused by natural and/or unexpected circumstances (e.g. thunder, fire, frost, etc.).

**6. RETURN OF GOODS** - The company will accept the return of goods after prior approval and written consent.

**7. BROADCASTING** - All returned goods must be accompanied by an official letter on the customer's letterhead and a delivery note. Under no circumstances will the company accept returned goods that do not comply with the above instructions. Any dispute relating to the terms and conditions of sale shall be settled by the Commercial Court of Pontoise (95300) - France, in accordance with the law and commercial practices in force.

-----  
WARNING - All products are manufactured in accordance with regulations. Standard power supply : 220/240 V / 50 - 60 Hz. Other power supplies on request. CSA certification can be supplied for certain products on request (valid for USA and Canada).

About this document: We have tried to make this document complete and factual. We reserve the right to make changes at any time without notice to prices, colours, materials, specifications, models and availability. This document may have been updated since the date of printing.



AVADY

95 520 OSNY  
FRANCE  
01 34 48 16 03



Non-contractual information and photos.

WWW.AVADYPOOL.COM